

ALCHEMY to INNOVATION

The Fiddlehead Fling Gala

FRIDAY | 05.03.2024 | 6 O'CLOCK

A Fundraising Event

Benefiting the Montshire Museum of Science

Fiddlehead Fling Gala 2024

Friday, May 3, 2024
6pm

Montshire Museum of Science
One Montshire Road
Norwich • VT • 05055
802-649-2200

**Proud to help
foster our
communities'
future
entrepreneurs
through STEM
education.**

ADVANTAGE

CAPITAL

Many thanks to

Emily and Errik
Anderson

For supporting
Montshire Museum of Science
Alchemy to Innovation

PRESENTING SPONSOR

Many thanks to

Ellen and Michael
Bettmann

For supporting
Montshire Museum of Science
Alchemy to Innovation

PRESENTING SPONSOR

Many thanks to

Office of Government &
Community Relations,
Dartmouth College

For supporting
Montshire Museum of Science
Alchemy to Innovation

PRESENTING SPONSOR

Many thanks to

**Barbara and Richard
Couch**

For supporting
Montshire Museum of Science
Alchemy to Innovation

FUND A NEED CHALLENGE

Table of Contents

Page

10	Message from the Executive Director
12	Alchemy to Innovation Sponsors
23	Alchemy to Innovation Volunteers
24	How it Works
25	Gala Guidelines
26	Gala Night Schedule
27	About Fund a Need
29	Menu
31	Live Gala Auction Item Descriptions
35	Raffle



Together, anything is possible.

**Commonwealth Proudly Supports
The Montshire Museum of Science**

Peter Fahey and Philip McCaull
Commonwealth Financial Network

603.727.7200

pete@cfnhanover.com | philip@cfnhanover.com

www.cfnhanover.com

21 Lafayette Street, Suite 304

Lebanon, NH 03766



Securities and advisory services offered through Commonwealth Financial Network® Member FINRA/SIPC, a Registered Investment Adviser.



For more than 135 years, Bar Harbor Bank & Trust has contributed to the economic health and vitality of the communities we serve. We are proud to have made charitable donations to more than 450 community organizations across Maine, New Hampshire, and Vermont and each year, Bar Harbor Bank & Trust employees volunteer countless hours of their time in their communities.

We believe good things happen when we work together.



www.barharbor.bank • 888-853-7100

Over 50 locations across northern New England

Vermont Branches:

Bethel/Royalton • Brandon • Pittsford • Quechee • Randolph • Rochester
Rutland • South Royalton • Williamstown • Woodstock

New Hampshire Branches:

Andover • Bradford • Bedford • Claremont • Concord • Enfield • Grantham • Hanover
Hillsborough • Lebanon • Manchester • Milford • Nashua • New London
Newbury • Newport • Peterborough • Sunapee • West Lebanon

Member FDIC

A Message from the Executive Director

Welcome to *Alchemy to Innovation!*

As the Executive Director of the Montshire Museum of Science, I am delighted to welcome you to our annual benefit event!

“Alchemy to Innovation” is a reference to the evolution of scientific exploration, research, and discovery. As humankind strives for a more equitable and sustainable future, the drive to create, explore, and innovate continues to motivate us all.

Science Museums – *especially interactive science museums like the Montshire* - invite creativity, exploration, and innovation every day. As you celebrate with us this evening, you will have the opportunity to see firsthand how the Montshire creates hands-on experiences in science, encourages real-world problem-solving, and utilizes emerging technologies.

Many people do not realize that the Montshire develops many of our own exhibits on site. In our upstairs galleries, you will be brought behind-the-scenes of two new exhibits under development – *Sculpt a Watershed*, which incorporates augmented reality technology to demonstrate forces that shape our waterways, and *Kugelbahn*, a new outdoor exhibit that employs a more rustic approach to interactivity.

Additionally, we host traveling exhibitions each summer. Next month, we will be installing *Ocean Bound*, an immersive traveling exhibition that focuses on watershed science and health to stimulate conversation and invite dialogue about our role in protecting vital freshwater resources. The exhibition highlights several key links between science and engineering to help us understand how we can be part of long-term solutions in protecting vital watersheds regionally, nationally, and globally.

From exhibits to programs, your attendance at the *Fiddlehead Fling Gala: Alchemy to Innovation*, participation in our raffle drawing, support of our inspiring live auction packages, and generous contributions to our “Fund a Need” initiative help make everything we do possible. From creating experiences with science that empower those we serve, to ensuring that everything we do is accessible to all, your support is crucially important and warmly appreciated.

With gratitude,

A handwritten signature in blue ink, appearing to read "Lara".

Lara Litchfield-Kimber
Executive Director

Alchemy to Innovation

Sponsors



Primary Sponsor:

GLOBAL FOREST PARTNERS LP

Presenting Sponsor:

Emily and Errik Anderson
Ellen and Michael Bettmann
Office of Government and Community
Relations, Dartmouth College

Fund a Need Challenge:

Advantage Capital
Barbara and Richard Couch

Leadership Sponsors:

Bar Harbor Bank & Trust
Commonwealth
Jen and Reid Hutchins
JMH Wealth Management, LLC
Just Kids Pediatric Dentistry
Kristine and Patrick McDevitt
Pure Solutions
Linda and Rick Roesch
Cathy and Peter Volanakis
Kathy and Curt Welling
White Mountains Capital LLC

Signature Sponsors:

Chippers, a Davey company
Crossroads Academy
Evans Group Inc.,
Expressmarts and Motor Fuels
The Richards Group
Tyler, Simms, & St. Sauveur, P.C.

(sponsors continued)

Supporting Sponsors: Granite Value Capital LLC
Otto & Associates, Inc.
Peraza Dermatology Group
Roadvision Systems LLC
Alicia Willette, DDS, PC

Raffle Sponsor: Von Bargaen's Jewelry

Additional Sponsors: R.C. Brayshaw & Company

Special thanks to: King Arthur Baking Company
for donating dessert!

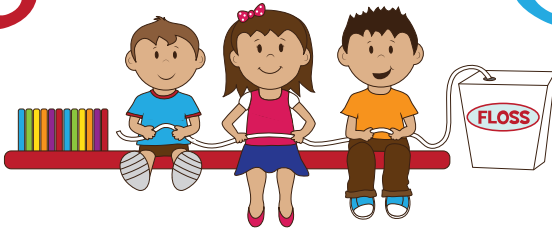
Many thanks to

Jen and Reid
Hutchins

For supporting
Montshire Museum of Science
Alchemy to Innovation

LEADERSHIP SPONSOR

Just Kids



Pediatric Dentistry

Many thanks to

**Kristine and Patrick
McDevitt**

For supporting
Montshire Museum of Science
Alchemy to Innovation

LEADERSHIP SPONSOR

*“In every walk with
nature one receives
far more than
he seeks”*

—John Muir

Proudly Supporting
The Montshire Museum



**JMH Wealth
Management, LLC**

*Confidential, Independent, Sensible
Investment Management*

**Jeffrey M. Harris, CFA®
Cole E. Harris, CFA®**

45 Lyme Road, Suite 307, Hanover, NH 03755
603-643-8899 | 877-643-8899

www.jmhwealth.com

Many thanks to

Linda and Rick
Roesch

For supporting
Montshire Museum of Science
Alchemy to Innovation

LEADERSHIP SPONSOR

Many thanks to

Cathy and Peter
Volanakis

For supporting
Montshire Museum of Science
Alchemy to Innovation

LEADERSHIP SPONSOR



pure solutions

**ORGANIC TICK
& MOSQUITO
CONTROL**

**SAFER FOR
YOUR**

- ✔ PETS
- ✔ FAMILY
- ✔ ENVIRONMENT



**MONTSHIRE
MUSEUM OF
SCIENCE**

**One free treatment for
Montshire members!**

New customers only with season sign-up

**(603) 838-PURE
PURESOLUTIONS.COM/UV**

Many thanks to

Kathy and Curt
Welling

For supporting
Montshire Museum of Science
Alchemy to Innovation

LEADERSHIP SPONSOR

Unlimited Partners

For over
30 years,
our unique
permanent capital
base has enabled White
Mountains to provide long-
term financial support to our
operating companies in the insurance
and related financial services industries.

Our approach to value creation is simple:
be opportunistic, invest with patience, and build
enduring partnerships with owners and
management teams.



White
Mountains

www.whitemountains.com

Alchemy to Innovation Volunteers

The Montshire gratefully acknowledges the following volunteers who donated their time, vision, creativity, and hard work throughout the past year to make the Gala event a success.

Honorary Gala Co-Chairs
Kristine & Patrick McDevitt

Rima Itani Al-Nimr, Catering
Emily Anderson, At-large
Julianne Austin, Décor
Jana Barnello, Sponsorships
Kate Nautiyal Bulthuis, Décor
Lindsay Coe, At-large

Anita Mohandas Drake,
Catering
Tracey Evans, Trustee
Nirav Kapadia, Trustee
Kathy Welling, Trustee
Andrea Wolffing,
Sponsorships

Special thanks to all Gala night volunteers!

Gala Bidding: How it Works

The Live Auction will begin around 7:30pm.

Please move to the central Atrium at that time.

- A gift to Fund a Need can be made at *any time* at the cashier desk.
- At each interactive exhibit, a QR code will be available to use to make a Fund a Need donation, if you wish to do so.
- To place a bid in the Live Auction, raise your bidder card when the auctioneer calls the amount you wish to bid. If you are the highest (winning) bidder, keep your card raised until your number has been called and recorded, and you have received a commitment card for your bid. At the end of the evening, bring your commitment card to the cashier to check out and make a payment.
- The highest—or winning—bidder is determined at the close of each item's section and each level of Fund a Need.
- If you wish to leave before the conclusion of the Live Auction, you may check out at any time to make a Fund a Need donation at the cashier desk.
- You may pay by check, cash, or credit card.

Thank you for your support!

Gala Guidelines

The following guidelines are in place to help ensure that this event is enjoyable for guests, a positive experience for donors, and a successful fundraiser for the Museum.

- All auction sales are final and “as is”; there are no exchanges or refunds. Before bidding, please carefully note any restrictions or limitations, indicated or implied. Donors typically estimate the value of each item.
- Services must be used within one year of the Gala date, unless otherwise specified. Please arrange deliveries and appointments directly with the donor if not otherwise noted.
- All private home, resort, or vacation offerings are intended for adults and their families, if allowed. Adults must accompany minors. These items are not transferable, except by permission of the donor. The winning bidder is responsible for any damages.
- Winning bidders of getaways are responsible for making their own travel arrangements. We cannot guarantee that multiple package components will be available at the same time.
- If you break an item during the Gala, you will be financially responsible for the item’s value.
- In general, your purchase is a confidential transaction with the Montshire Museum. However, in some cases, your name and contact information must be provided to a donor in order for you to redeem your item or service.
- All items must be paid for in full and removed by 10pm on Gala night, unless you have made other arrangements with Museum staff.

Gala Night Schedule

- 6 p.m. Social Hour
Enjoy delicious hors d'oeuvres by Christophe Catering, two complimentary drinks, and a cash bar, served by Maple Street Catering. A complimentary cocktail will be served to guests arriving 6-6:30 p.m.
- Interactive experiences open!*
- 7:30 p.m. Live Program in the Main Gallery
Live Auction
Fund a Need
Raffle Drawing
- 8:15 p.m. Dessert
Enjoy delicious treats by King Arthur Baking Company
- 8:15-9 p.m. *Interactive experiences open!*
- 9 –9:30 p.m. Check out

About Fund a Need

Fund a Need

Fund a Need is our signature “flash-bidding auction” that provides vital funding to advance the Montshire’s educational priorities and strategies. Bidding starts at the highest level, and then proceeds to bids for lower amounts.

What is a Paddle Raise?

It’s an opportunity to donate to the Montshire Museum of Science and provide support at a level that is right for you. Instead of asking for bids, the auctioneer will ask you to make a donation to the Museum. If you would like to participate at the level offered, raise your bid card and keep your card raised until your number is called and recorded, and you receive a commitment card from a volunteer.

Why Fund a Need?

During Fund a Need, guests are given the opportunity to make a tax-deductible donation that will help us *forge and empower a community of lifelong learners through engagement with science.*

We invite you to imagine what your donation can do!

- \$5,000 can provide critical support for this summer’s exhibition, *Ocean Bound*. A contribution at this level will allow us expand educational programming, highlight local partners doing work to protect our Connecticut River Watershed, increase museum access for rural families, and create new community partnerships.
- \$2,500 can provide significant funding in support of new outdoor exhibits, such as *Kugelbahn*, that engage museum visitors with outdoor education experiences at the intersection of science and engineering.

- \$1,000 can fund field trips from five STEM Alliance partner school classrooms, helping to ensure rural students have access to grade-appropriate Montshire educational resources.
- \$500 can provide monthly materials for the Teacher Leader Program, our signature teacher professional development initiative.
- \$250 can support a “Sensory Saturday” event, ensuring free admission for families/caregivers with neurodivergent persons in their household.
- \$100 can provide a family of six with free admission to the Montshire through our Warm Welcome Program.

Advantage Capital and Barbara and Richard Couch challenge YOU to participate in Fund a Need. All gifts will support the Montshire’s mission *to forge and empower a community of lifelong learners through engagement with science.*

Once you raise your paddle, a volunteer will hand you a commitment card that states your donation. Please take it to the cashiers at the end of the night when you are ready to check out.

Gala Menu

Delicious and fantastical hors d'oeuvres, inspired by *fusion cuisine*, by **Christophe Catering**, including:

For the omnivore:

Smoked salmon sides with capers and onion ~ lemon pearls

Pâtés and charcuterie

Smoked duck with cherry chutney bruschetta

Chicken and cilantro skewers

Beef tenderloin and mushroom skewers

Vegetarian and vegan options:

Gourmet cheeses from just ripe to aged

Strawberry arugula salad with goat cheese and almonds

Mixed greens with assortment of toppings

Butternut squash with a smoked maple glaze

Artichoke and lemon foam bruschetta

Blue cheese, watercress, and honey bruschetta

Mozzarella stuffed tomatoes with balsamic pearls

On the lighter side:

Fruit juice pearls

Watermelon and feta spoons

Chilled cucumber soup

Prosciutto and melon skewers

Smoked trout on cucumber with onion pearls

Full Cash Bar by **Maple Street Catering:**

Wine, beer, spirits and our 2024 *signature science* cocktail (mocktail available upon request):

Complimentary cocktail: *Aperol spritz*
Prosecco with a pipette of Aperol

Specialty cocktail: *Lemon Drop*
Triple sec, vodka, lemon juice, simple syrup – garnished with sugar on the rim and a pipette of blackberry syrup

Dessert donated by **King Arthur Baking Company**

Strawberry Rose Cookie:

An elegant butter cookie filled with strawberry rose botanical jam and accentuated with rose petals and gold foil

Honey Lemon Cake:

Light and sweet honey lemon cake with toasted almond and pink and gold meringue

Chocolate Tart:

Chocolate graham crust filled with dark chocolate ganache, a sprinkle of hickory smoked sea salt, and topped with toasted marshmallow



Live Auction

There are four amazing auction packages on which to bid!

1. Pottery Palooza

Explore your creative side with this fun and artistic opportunity! Learn the traditional craft of wheel throwing with Farmhouse Pottery and make your very own piece of stoneware. Then savor your morning coffee or tea in a Silo Mug gift set, Farmhouse Pottery's most popular design.

Generously donated by Farmhouse Pottery, Woodstock, VT.

Value: \$550

2. Montshire Extravaganza

An overnight adventure at the Museum...just for you! Enjoy exclusive, after-hours access to the Montshire *all night long!* Collect a group of up to 20 family members or friends for an overnight extravaganza at the Montshire. Explore your favorite exhibit and engage in hands-on discovery, supported by the expert assistance of a Montshire Education team member. Learn about constellations, planets, and the wonders of the night sky in the Montshire's amazing portable planetarium, Star Lab. Bring your sleeping bags and flashlights for an 'indoor' adventure overnight. This package includes gift-cards from the Co-op Food Stores for dinner options and breakfast from Lou's Restaurant & Bakery – plus loads of fun with science! All ages are sure to have a memorable time during this extraordinary experience.

(Event can take place 6:00pm–8:30am only. See Museum policies and guidelines for events. Work with our rental coordinator to schedule soon to reserve an available date. Blackout dates apply.)

Value: \$2300

"The Montshire "Evening Under the Stars" overnight was amazing. It was for our 8-year-old daughter's birthday party sleepover and everyone had a BLAST. The Science Educator, Rebecca, was amazing and we all loved having the run of the museum in our PJs until late!"
Kate Bulthuis, winner 2023

3. Alchemy to Innovation Dining Experience

Treat yourself and your friends (up to a party of eight) to an evening of laughter, good food, good wine and good company. Community and cuisine make for a fantastic way to enjoy life!

The very best four-course traditional Italian dining experience with this unique and private dinner in your own home, provided by Hanover resident and food writer, Teresa Lust. Teresa will consult with you to design a custom menu of *locally and seasonally* sourced food and she will choose specially paired Italian wines that will delight all palates. Four copies of her book, *A Blissful Feast, Culinary Adventures in Italy's Piedmont, Maremma, and Le Marche*, will serve as keepsakes for you and your guests. Necessary tableware and serving pieces will be provided. At the end of the evening, you will have a spotless kitchen and the luxury of time to relax after an amazing night of entertaining!

(Schedule a mutually agreeable date and time with Teresa. Blackout dates apply: *May 8-19, May 31-June 5, two-week period end of Aug/early September 2024, December 20 2024–January 4, 2025*)

Generously donated by Teresa Lust.

Value: \$2000

- “*This is an incredible and memorable way to spend an evening with friends or family. A five-star restaurant experience in your own house!*” Jana Barnello, winner 2023

4. House on Summer Point, Lake Champlain

Enjoy a long weekend with your family or friends on beautiful Lake Champlain with uninterrupted, panoramic views of the Split Rock Mountain State Park. This 4-bedroom home is located in Ferrisburg, Vermont at the mouth of Otter Creek, Kelloggs Bay.

Summer Point is the oldest camp on Lake Champlain, renovated in 2020, featuring a gourmet kitchen, living room, plus separate dining area, expansive deck with firepit, and much more. Kayaking, walking, and swimming abound right out the back door. Enjoy the region's many outdoor activities or touring charming Vermont villages—Vergennes is perfect for bakeries (*Vergennes Laundry* gift card included), cafes, and browsing, climb Camels Hump, or swing the racket or clubs at Basin Harbor.

While you revel in the region's natural beauty, enjoy an evening by the firepit in style with *two* Pendleton Eco-wise wool blankets in the traditional 'Glacier Park White' stripe.

Sleeps up to 8 guests (3 queen beds, 2 twin beds). Available for up to TWO *families*, or, TWO-to-THREE *adult couples only*, for one long weekend Friday to Monday. Book with the donor at a mutually convenient time between September and October 2024*. (Black-out dates include week of September 2-8, 2024 / *mutual dates possible for 2025). Travel time is 1.5 hours from Norwich, VT.

Generously donated by Kristine and Patrick McDevitt.

Value: Priceless

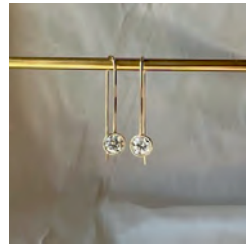
Raffle

VON BARGEN'S

The finest diamonds & artisan jewelry

Designed and created by Von Bargaen's Jewelry, these 18-karat yellow gold and diamond drop bezel earrings feature elongated yellow gold hooks with a single bezel set round brilliant cut diamond at the base of each earring. The two diamonds weigh 0.87 carats in total and are F in color and VS2 in clarity. The earrings are finished in high polish.

Value: \$4960



Price: \$50 per entry

You need not be present to win. Courtesy of **Von Bargaen's Jewelry**.



SPRUCE UP YOUR GREEN SPACE

Help your green space
bounce back.

Plant Health Care Monitoring Programs
Tree & Shrub Pruning | Insect & Disease
Control & Prevention | Landscape Design &
Installation | Turf Care

Chippers, a Davey company
chippersinc.com
Enfield Office | **603-810-6614**



Crossroads Academy

STRONG MINDS • KIND HEARTS

A Co-educational K-8 Independent School in Lyme, NH
committed to academic excellence and moral integrity.



Email admission@crossroadsacademy.org to learn more
about our rolling admission and schedule a visit today!

www.crossroadsacademy.org

LOCAL CONVENIENCE

EVANS
EXPRESSMART

EVANS
MOTOR
FUELS

1038 N Main St
WRJ, VT



Exit 9, I-89
Warner, NH



1167 Route 4
Canaan, NH

EVANS
MOTOR
FUELS

384 Main St
New London, NH



Exit 16, I-89
Enfield, NH



361 Miracle Mile
Lebanon, NH



546 NH Route 11
Sunapee, NH



SUPERIOR FUEL DELIVERY

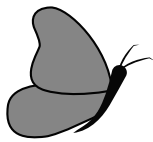
EVANS
MOTOR FUELS

Delivering quality fuel to stations,
towns, farms and businesses
throughout NH & VT.

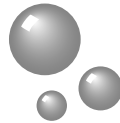


Evans Group, Inc. • (603) 448-3400
evansexpressmart.com • evansmotorfuels.com

Ask About
Our Fleet
Cards!



Proud to Support Discovery & Education Through the Montshire Museum of Science.



Home, Auto & Business Insurance
Employee Benefits • Retirement Plans



The
**Richards
Group**

FINANCIAL, INSURANCE
& HR SOLUTIONS

1 Oak Ridge Road,
Building #2, West
Lebanon, NH 03784

(800)-222-6016
therichardsgrp.com

Insurance and Employee Benefits services provided through Richards Inc., Advisory services are offered through TRG Investment Advisors, LLC dba TRG Retirement Plan Consultants ("TRGIA"), a Registered Investment Adviser. Richards Inc. and TRGIA are affiliated as Richards Inc. is the parent company of TRGIA. Advisory services are only offered to clients or prospective clients where TRGIA and its representatives are properly licensed or exempt from licensure. Past performance is no guarantee of future returns. Investing involves risk and possible loss of principal capital. No advice may be rendered by TRGIA unless a client service agreement is in place.



TYLER, SIMMS & ST. SAUVEUR, PLLC

Certified Public Accountants & Business Consultants

Whether we're helping your business do business or advising you as an individual or family, our first priority at TSS is to develop solutions that work for you.

Specializing in:

Tax Consulting & Compliance

Assurance & Accounting

Bookkeeping Services



An Independent Member of CPAmerica International

19 Morgan Drive

(Phone) 603-653-0044

Lebanon, NH 03766

www.tss-cpa.com

(Fax) 603-653-0209



Alicia J. Willette, DDS



*Providing a disciplined
“three pillars” approach
to wealth management.*

We proudly support the Montshire Museum of Science.

Tony Abbate, CFA

Phone: (603) 643-0770
E-mail: tony@granitevaluecapital.com
44 South Main Street, 1st Floor
Hanover, NH 03755

granitevaluecapital.com



Full Service Financial Planning

Susan O. Goodell, CFP®

David W. Otto, CFP®

16 Beaver Meadow Road

Norwich, Vermont 05055

(802) 649-1946

www.ottoandassociates.com

PERAZA DERMATOLOGY GROUP

Just like visitors to the
Montshire...

...we at **Peraza Dermatology Group**
use microscopes and lasers.

We love soapy water and pH levels.

We enjoy magnifying glasses and
engage in scientific discovery every day.

And just like visitors to the Montshire,
we respect the incredible power of the
sun's rays – wear sunscreen!



www.perazaderm.com



Many thanks to

R.C Brayshaw & Company, LLC

For supporting
Montshire Museum of Science
Alchemy to Innovation

Special thanks to the Fiddlehead Fling Gala vendors:

Christophe Catering
Maple Street Catering
Magnum P.A.
Norwich Bookstore
Roberts Flowers

**We are honored
to continue our
support of the
MONTSHIRE MUSEUM
and the valuable
contributions it makes
to our community.**

GFP

GLOBAL FOREST PARTNERS LP

Advising Institutional Investors on Sustainable Forestry
Investments Throughout the World for More Than Thirty Years
www.gfplp.com