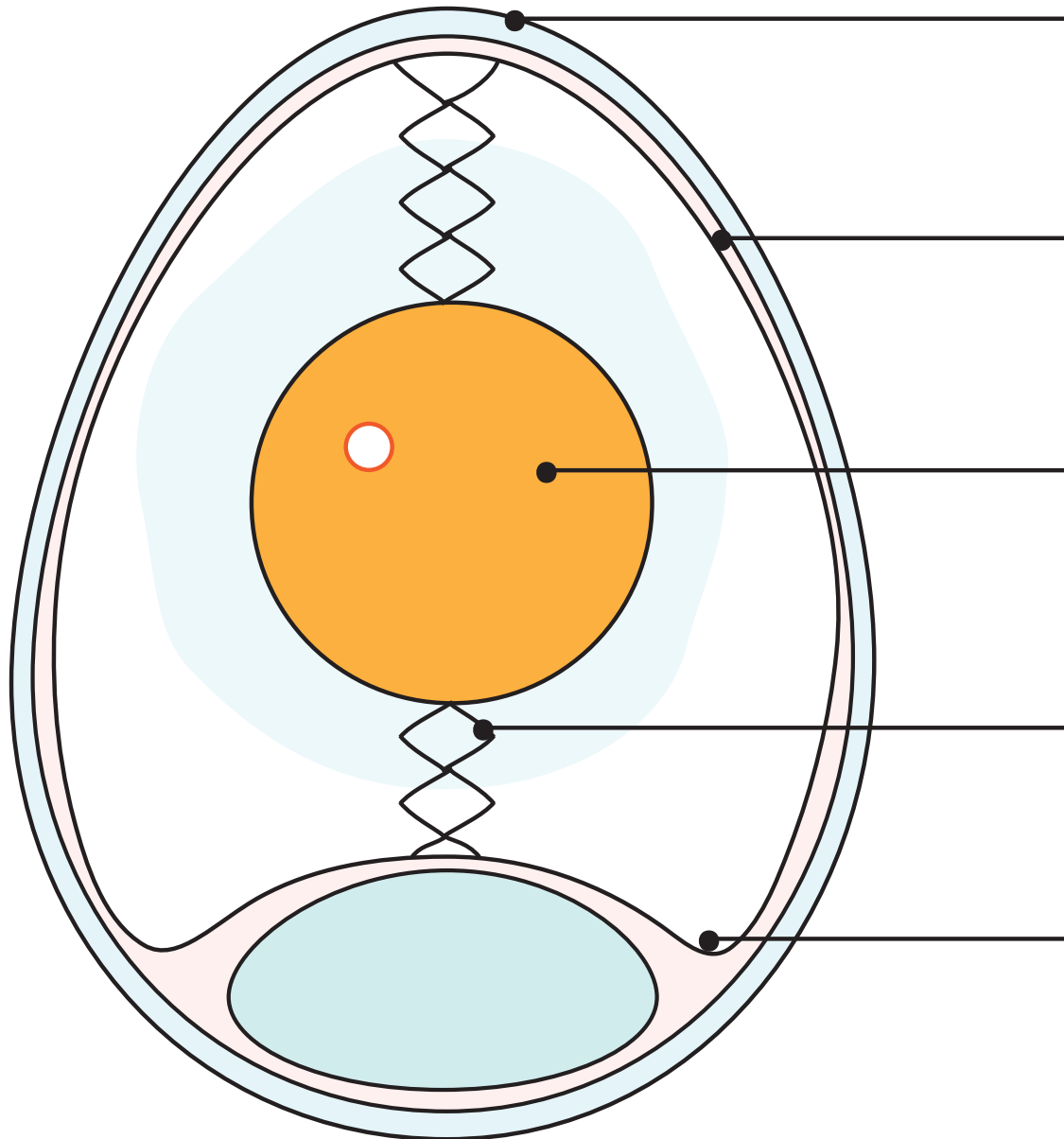




# INSIDE AN EGG



**Shell:** Keeps the egg safe with tiny pores to let air and water out.

**Membrane:** A skin-like layer that holds it all together.

**Yolk:** Contains all the fat and energy to grow a new chick, and its own membrane, too!

**Chalazae:** White bungee-like cords that hold the yolk in place.

**White:** Provides all the protein and water for a growing chick.